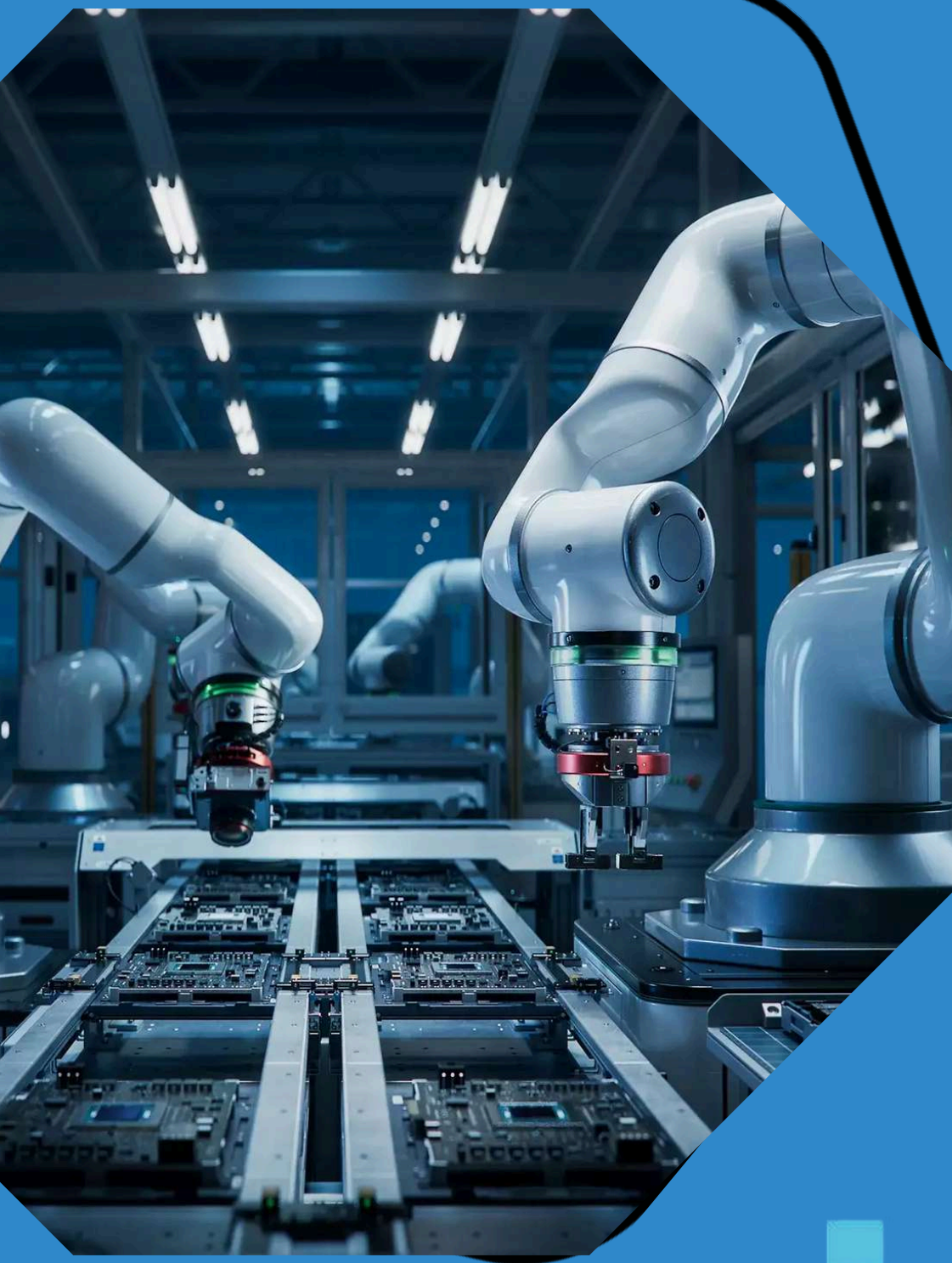


EALCO

INDUSTRIES



**Born in FACTORY,
Raised on TECHNOLOGY,
Growing into INNOVATION.**

**ENGINEERING EXCELLENCE.
TECHNOLOGY-DRIVEN INNOVATION.**

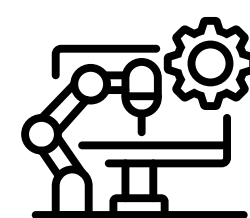
2016

Founded in 2016 in Zadar, we provide software development, hardware integration, and consulting services for manufacturing and industrial operations.

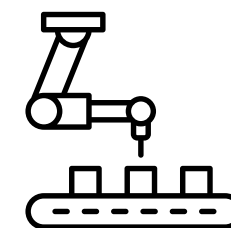
Today, our team of 20+ engineers is trusted by industry leaders such as Ford, Valeo, KUKA, and Thyssenkrupp.



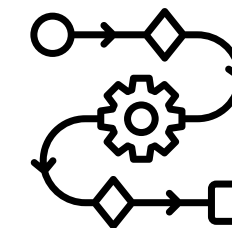
ENGINEERING MEETS INNOVATION



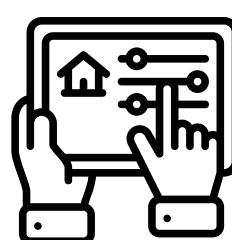
Industrial automation engineering



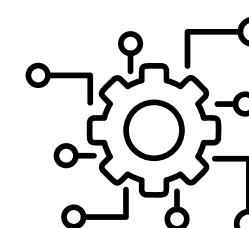
PLC programming and integration



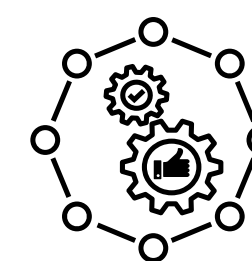
Virtual commissioning and process simulation



Robotics and electro-pneumatic systems



Production optimization and cycle time improvement



Full-system commissioning and lifecycle support



RELIABLE. ADAPTABLE. EASY TO PLUG IN.

Over 80+ projects across automotive, logistics, aerospace, and smart factory systems, we've consistently focused on one thing: stepping in fast, working with precision, and leaving systems running better than before.

Whether supporting a factory rollout, integrating with a robotics partner, or strengthening a long-term collaboration, the goal has always been to bring clarity and stability to complex setups.

That's why industry leaders like Ford, Amazon, JLR, Audi, Boeing, and Bosch continue to trust us.

Our projects.

Delivering results across Europe.

JAGUAR

JLR



amazon



SYNTEGON
PROCESSING & PACKAGING



VOLVO

KUKA



TENNECO



VALIANT TMS



BUILDING EXPERTISE IN AUTOMOTIVE MANUFACTURING

We have supported environments tied to global automotive manufacturers — directly on site or through their network of partners. These setups vary widely, but the goal is always the same: keep production moving, reliably and without delays.

JAGUAR

JLR



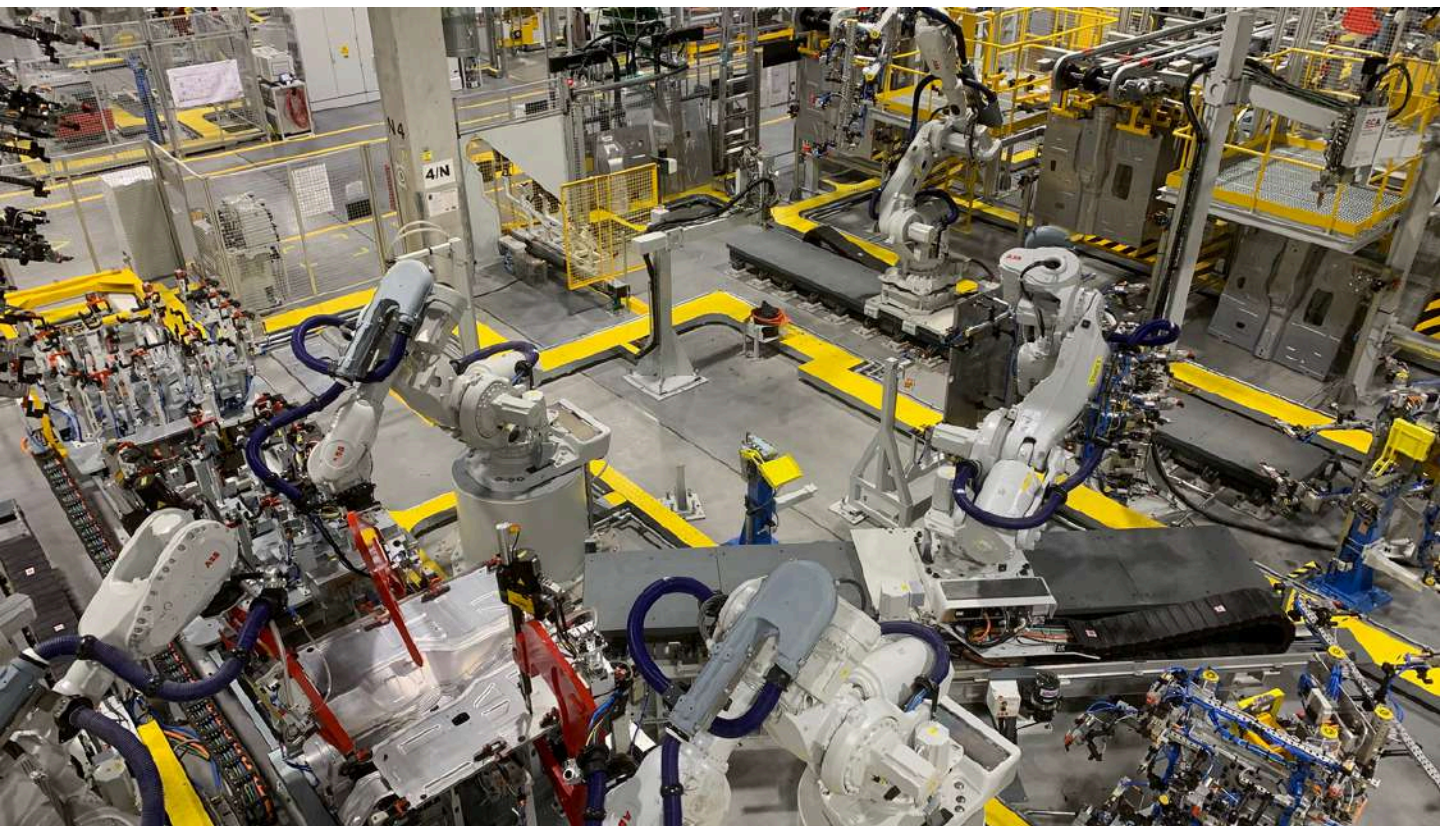
Volkswagen



DAIMLER



VOLVO



JAGUAR LAND ROVER

What We Did?

- Full greenfield BIW & final assembly setup
- Underbody, framing & roof integration
- Electrical installations
- Robot programming and PLC software development

Tools & Tech

- Allen-Bradley Safety PLC
- ABB IRC5 robotics
- SEW drives

JLR required a robust, modular setup for their operations. We delivered a future-proof assembly system with precision robot logic, clean documentation, and ready-for-handoff logic that scales with their team.

SUPPLIERS & ENGINEERING ECOSYSTEMS

Many of our projects take place behind the scenes — inside supplier facilities, test environments, and production lines that keep the industry moving. These aren't always visible to the public, but they're critical to keeping everything running.



LOGISTICS, AEROSPACE & MODULAR SYSTEMS

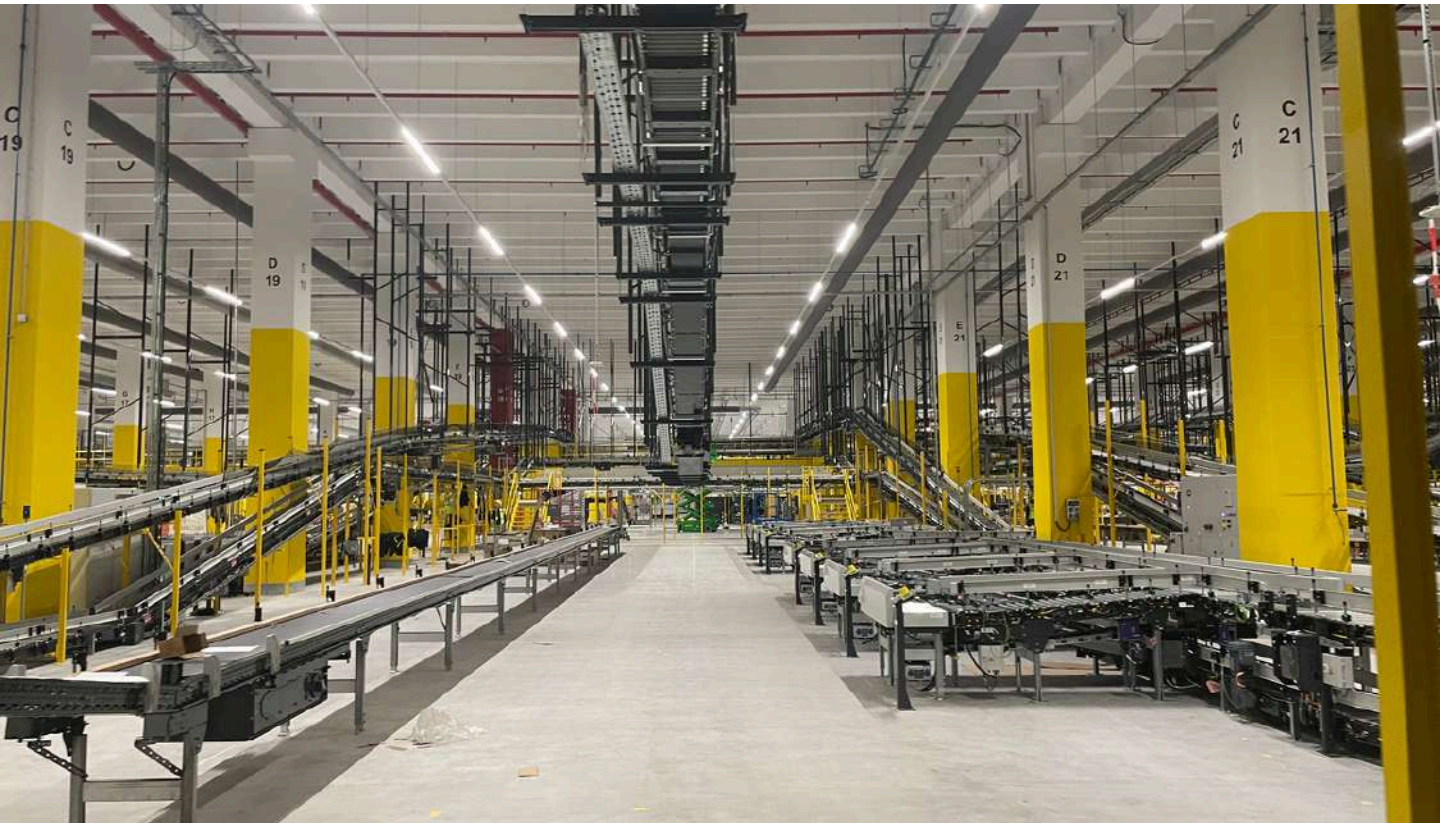
Beyond automotive, we've supported fast-paced logistics networks, aerospace-related facilities, and modular environments. Different rules, different timing — same need for flexibility and clean delivery.



BOSCH



SYNTEGON
PROCESSING & PACKAGING



AMAZON

What We Did?

- Developed PLC software for AOI line
- Optimized production flow and cycle times
- Led IOQ and ramp-up phases

Tools & Tech

- Siemens S1500 Safety PLC
- NORD drive systems

With Amazon's push for highly adaptive production environments, speed and safety were key. Our software ensured fast, flexible commissioning with minimal ramp-up delays and scalable modular code.

INTEGRATORS & LONG-TERM PARTNERS

A large part of what we do flows through engineering firms, integrators, and delivery teams. We plug in where we're needed — sometimes early, sometimes late — and often get called back when it matters most.

The KUKA logo consists of the word "KUKA" in a bold, orange, sans-serif font.The Interplex logo includes a dark blue circular icon with a white gear-like pattern on the left, followed by the word "Interplex" in a dark blue, sans-serif font.The VALIANT TMS logo displays the words "VALIANT TMS" in a bold, blue, sans-serif font.

EU PROJECTS & ACADEMIC PARTNERSHIPS

INNOVAMARE PROJECT



Contributed to sustainable blue tech through the Interreg Italy–Croatia initiative, focusing on underwater innovation and Adriatic Sea preservation.

UNIVERSITY OF ZADAR



Partnered on underwater robotics and marine tech, supporting research in biology and maritime engineering.



LET'S ENGINEER THE FUTURE TOGETHER.

We combine precision, innovation, and real-world experience to help you build smarter, safer, and more adaptable systems — ready for what's next.



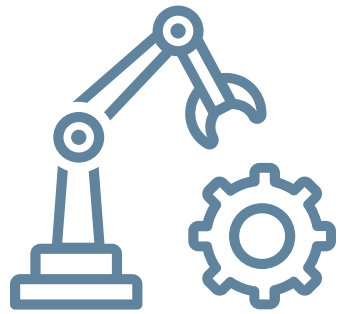
Engineering innovation **into every process.**

We transform technical expertise into smart automation that drives progress and real-world impact.

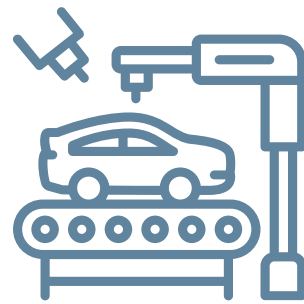
Shaping the future of automation and robotics.

We aim to build adaptive, intelligent systems that power the next generation of industry and innovation.

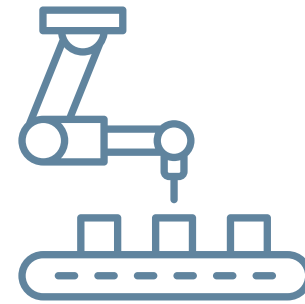
A methodical approach to smarter systems.



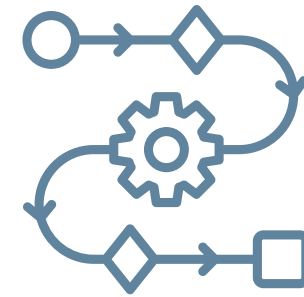
Industrial
Automation



Automotive
Production



Robotics
Integration



Process
Optimization



Underwater
Robotics



Manufacturing
Innovation

HOW WE WORK & THE VALUE WE DELIVER

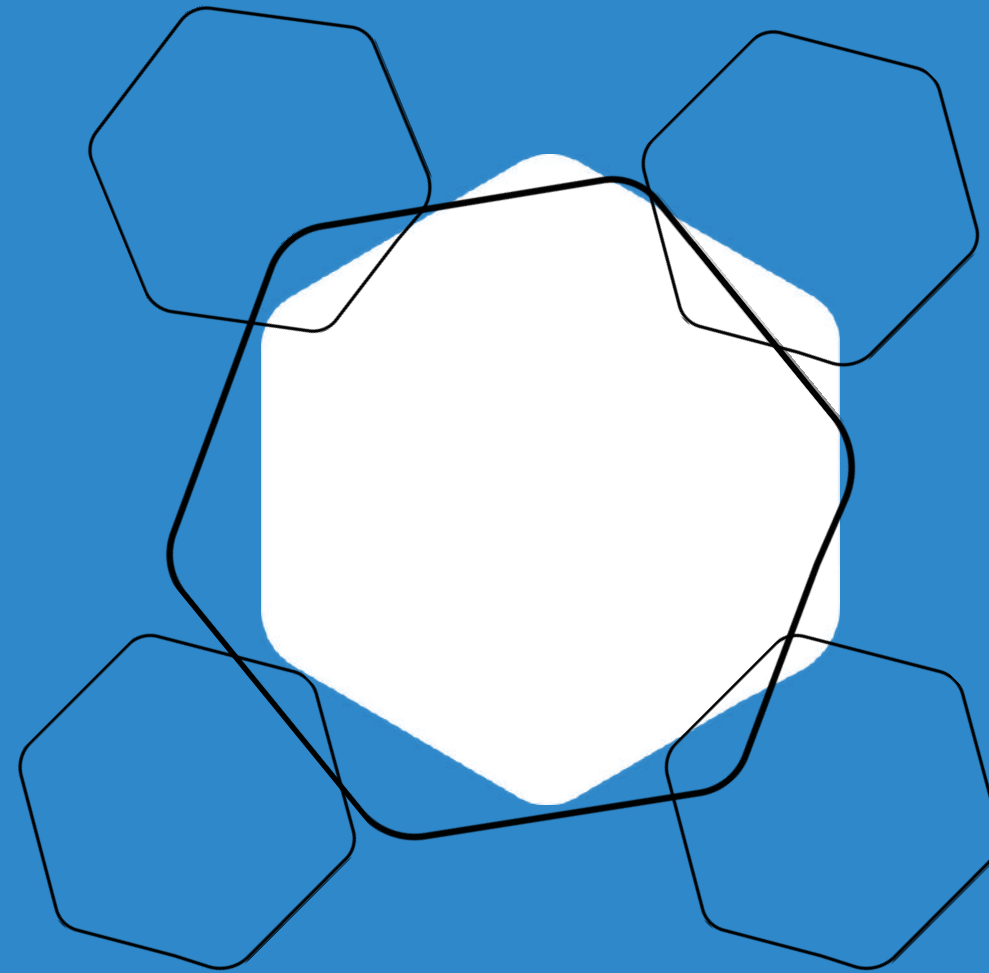
We combine hands-on engineering with continuous optimization to build smarter, safer, and more adaptable automation systems.

SYSTEM DESIGN

Process analysis
Simulation & planning
Risk detection

SMART COMMISSIONING

Virtual testing
Onsite validation
Safety-first launch



ONSITE EXECUTION

Deploy and fine-tune systems
Monitor safety and cycle time
Resolve real-time issues

LONG-TERM SUPPORT

Track performance post-launch
Recommend process upgrades
Adapt systems for future needs

Our team.

Led by engineers, driven by innovation.



Deni Mišlov
CEO / Lead Software Engineer



Đani Kurić
CTO / Lead Software Engineer



Roko Košta
Senior Engineer



Josip Perinčić
Software Engineer



Marko Klapan
Software Engineer



Lučano Čiklič
Robot Programmer



Karlo Crnčec
Senior Engineer



Filip Milutin
Senior Engineer / Lead of Transport and
Warehouse Technology Department



Paula Skorić
Head of Administration




Frane Šango
Software Engineer



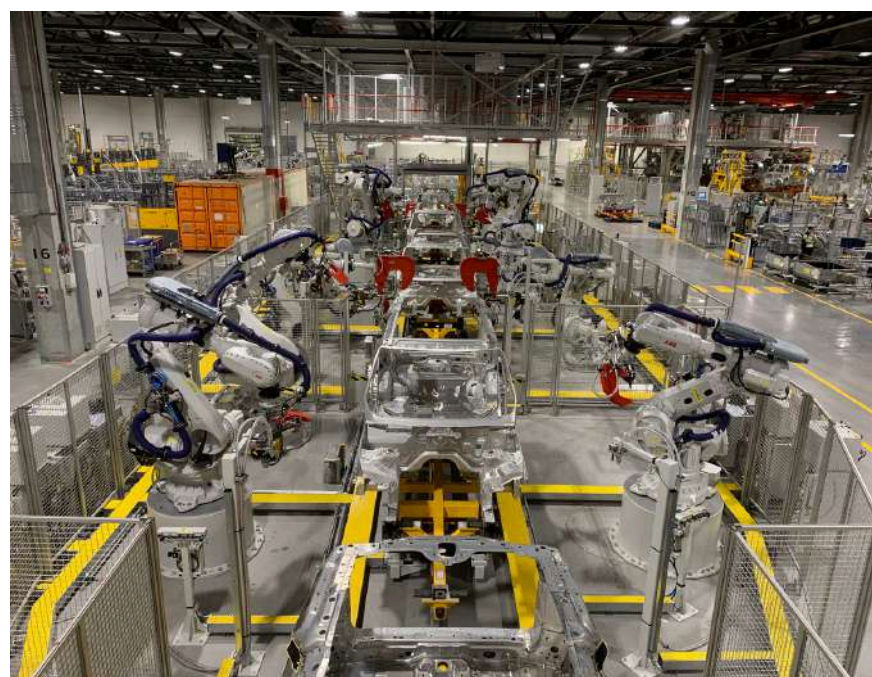
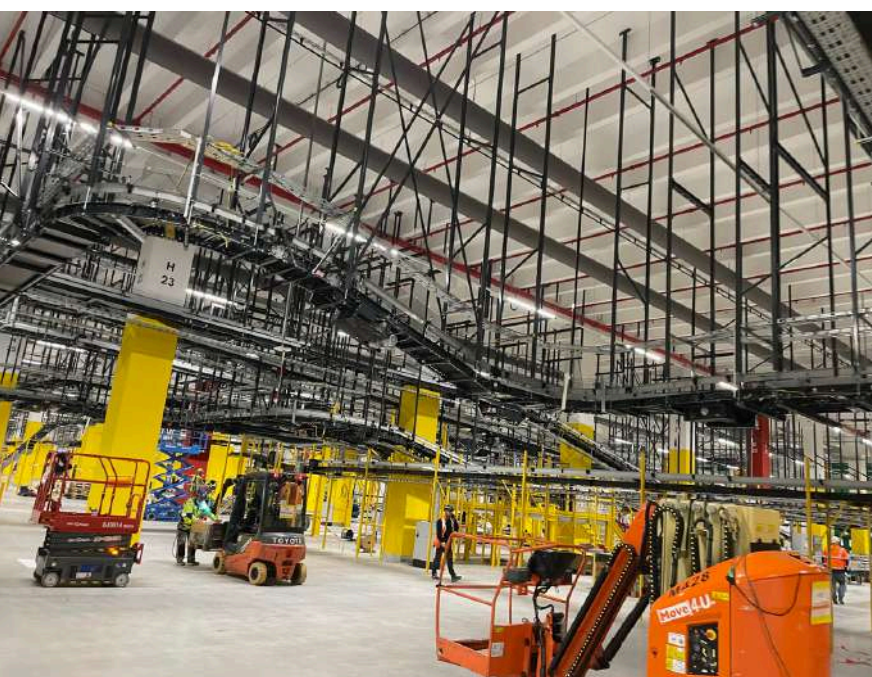
Dejan Stanković
Junior Software Engineer



Daniel Dražić
Junior Software Engineer



**WE'RE ON A MISSION TO
ENGINEER SYSTEMS THAT DON'T
JUST WORK — BUT EVOLVE,
ADAPT, AND OUTPERFORM.**



The background image shows a yellow industrial robotic arm in a factory environment. The arm is positioned on a circular base and is surrounded by various mechanical components and wiring. A blue semi-transparent overlay covers the entire image, and a light blue grid pattern is visible at the bottom. A white text box is overlaid on the left side of the image.

**Let's Build
What's
Next.
Together.**

WE ARE HERE TO HELP



DENI MISLOV

CHIEF EXECUTIVE OFFICER

dmislov@galo-industries.com

<https://galo-industries.com>